

# FOREIGN TRADE

OF THE DEMOCRATIC PEOPLE'S  
REPUBLIC OF KOREA

JUCHE 96  
(2007) **2**



EDITED BY FOREIGN TRADE PUBLISHING HOUSE



# Products from PUHUNG

## Korea Puhung Trading Corporation

Add: Jongphyong-dong, Phyongchon  
District, Pyongyang, DPR Korea

Tel: 850-2-18111-3818175

Fax: 850-2-3814475

Tlx: 36047PTC KP

E-mail: puhung@silibank.com

**T**he quarterly journal "Foreign Trade of the DPRK" is available in English, Russian, French, Spanish, Chinese and Japanese versions.

Please visit <http://www.kcckp.net>.

A QU

Juche

Edit

Pho

Publis

F

Socho

THE





## A QUARTERLY JOURNAL

Juche 96 (2007) No.2 (403)

Editor: Jong Pyong Gil

Photo: Kim Sun Nam  
Jong Sung Chan  
Im Jong Guk

Published by the Foreign Trade  
Publishing House

Sochon-dong, Sosong District,  
Pyongyang, DPR Korea

## CONTENTS

Taeon Heavy Machine Complex.....	2
Kaesong Insam Processing Factory.....	5
Korea Ryonsung Joint Corporation.....	6
Foreign Trade Making Rapid Progress.....	9
Summary of the DPRK	
Law on the Leasing of Land.....	10
JANGMYONG.....	11
KCC Taking a Big Step Forward.....	12
Kumintungunal (pill), Pibior-1, Tetrodocain Injection.....	13
Korea Sonbong General Corporation.....	14
Products from PGFJC.....	16
Korea Songaksan Trading Corporation.....	18
Light Ring of Natural Calcite.....	20
Open up a New World of IT with Us.....	21
Cooperation and Exchange Making Headway.....	22
Koryo-Global Credit Bank.....	22
National Institute for	
Standardization of the DPRK.....	23
Global Group Pyongyang Office.....	23
Paint Production and Export on the Upswing.....	24
Kyongryon Aeguk Soda-pop Mill.....	25
Kaesong—A Tourist Attraction of Korea.....	26
Pyongyang Condiment Factory.....	28
Korea Oriental Instant Medicinal Center.....	29
Paint "HYONMU".....	30
Pyongyang Optical Fiber Cable Factory.....	31
Korea National Land & Environment Trading Corporation.....	32

## THE CHAMBER OF COMMERCE OF THE DEMOCRATIC PEOPLE'S REPUBLIC OF KOREA

Add: Jungsong-dong, Central District, Pyongyang, DPR Korea

P.O.Box 89 Tel: 850-2-3815926 Fax: 850-2-3815827 E-mail: micom@co.chesin.com



# Taeon Heavy Machine Com



The Taeon Heavy Machine Complex is a gigantic producer specialized in the production of large-size electric machines including generators and transformers.

The complex has several comprehensive workshops, heat-treatment workshop, sheet metal processing workshop and insulation workshop,

and employs a large number of technicians and skilled workers.

It turns out diverse kinds of electric and generating equipment including hydraulic generators and turbines, thermal generators and turbines, high-voltage motors and transformers with a capacity of hundreds of thousands of kilowatts.

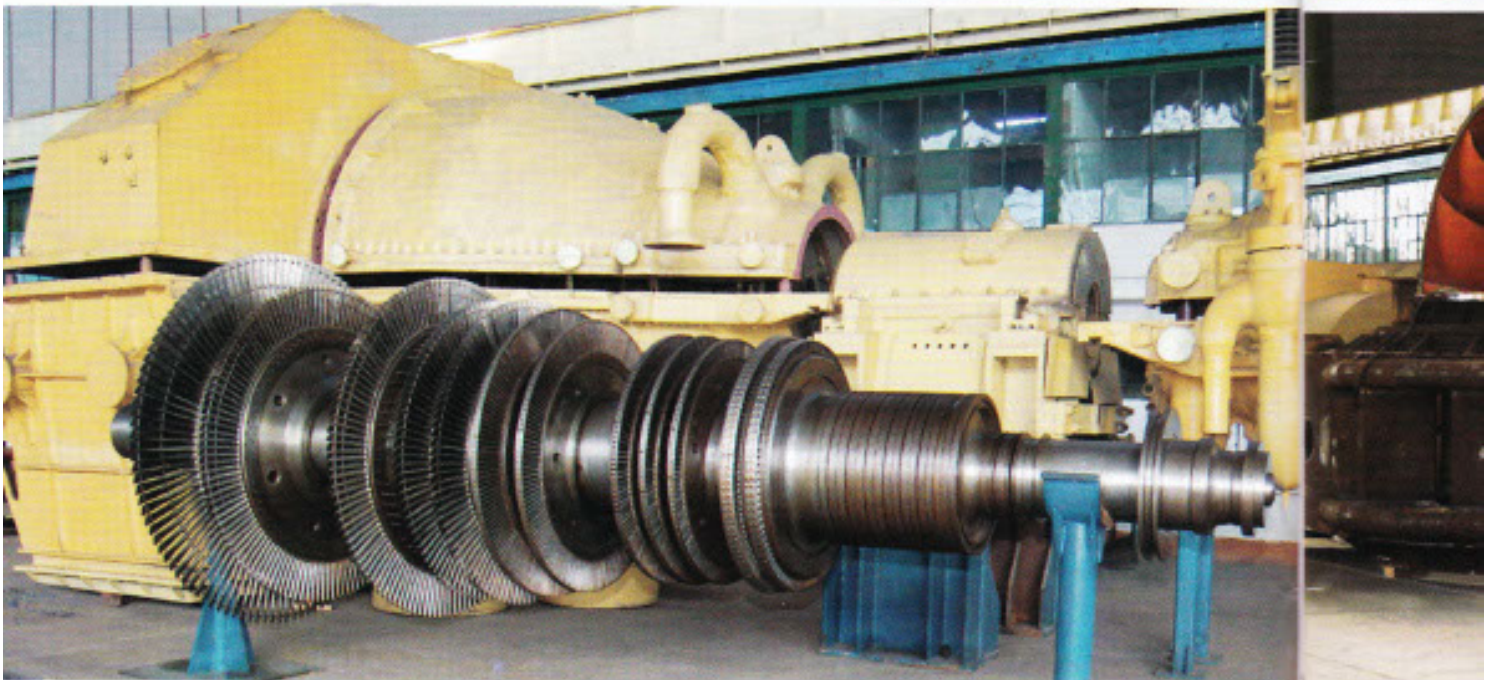
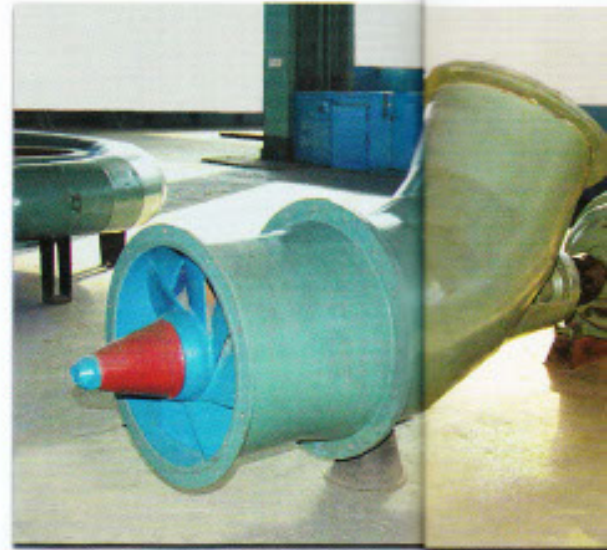
The technical features of some of generators are introduced below:

## - Small-size duct-type hydraulic turbine generator

Capacity:	100kW
Voltage:	400V
Revolution:	720rpm
Diameter of turbine blade:	700mm

- Vertic

Capacity:  
Voltage:  
Current:  
Revolution:  
Excitation m

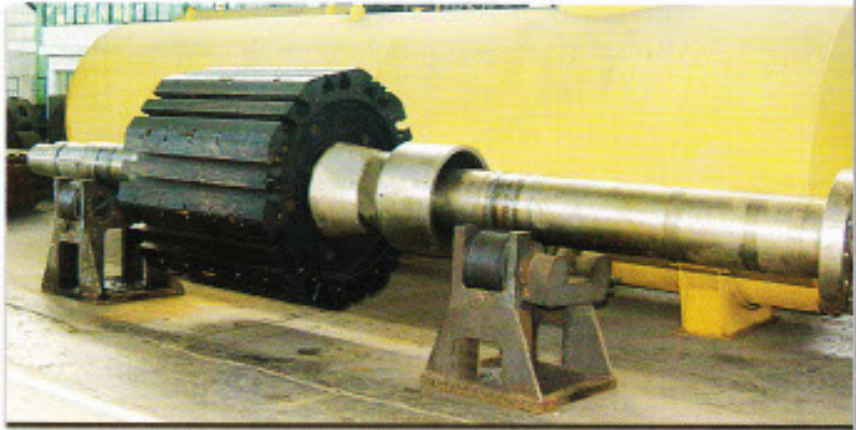




# e Complex

## - Vertical shaft hydraulic generator

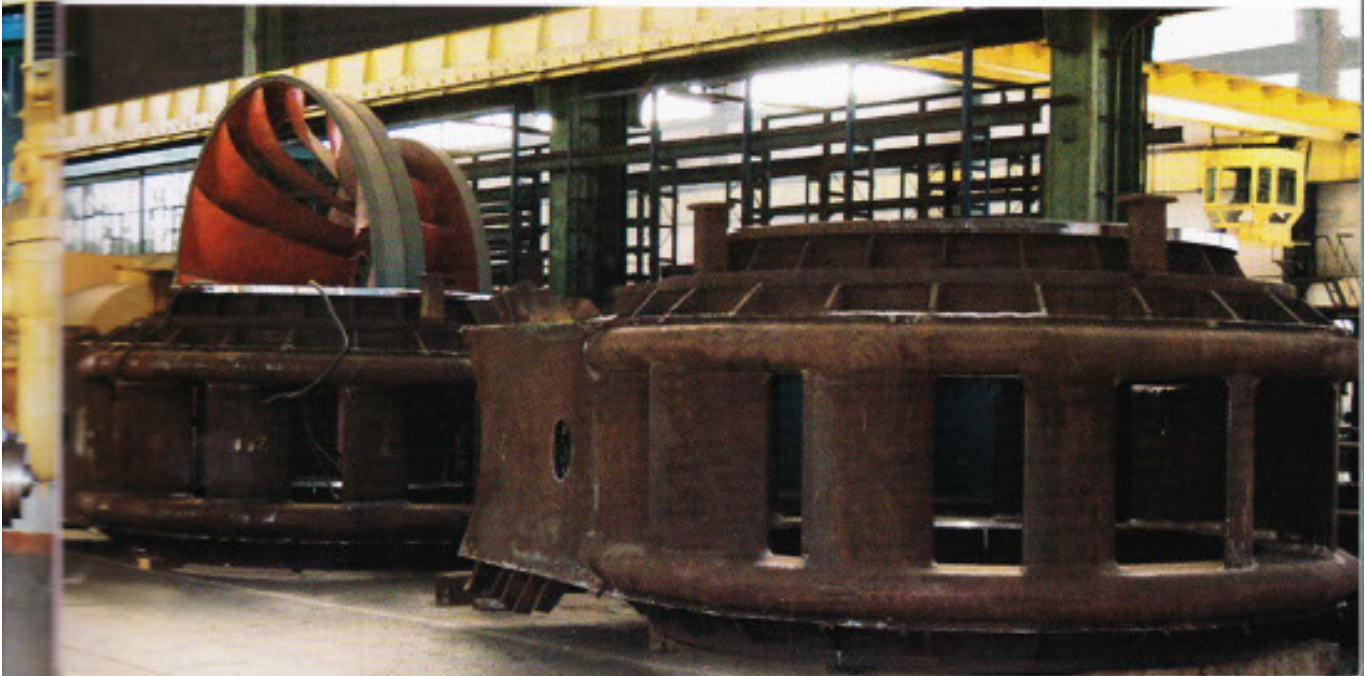
Capacity:	500kW
Voltage:	3,000V
Current:	120.3A
Revolution:	514rpm
Excitation mode:	Phase complex self-excitation



## - Volute chamber for Francis turbine

Output of turbine:	1,000kW
Diameter of turbine blade:	1,000mm
Applicable head of water:	20-40m
Flow rate:	3.6m <sup>3</sup> /s
Revolution:	360rpm
Installation:	Vertical shaft direct coupling

The Taean Heavy Machine Complex is directing its primary effort into the quality improvement of the products, strictly adhering to the credit-first principle in trade dealings with customers.

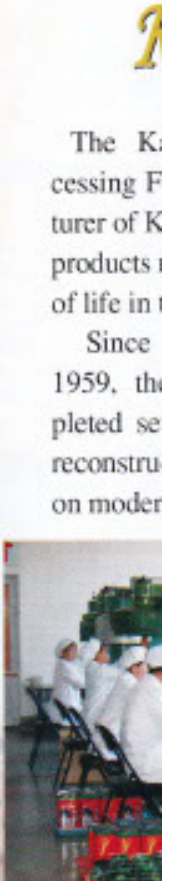
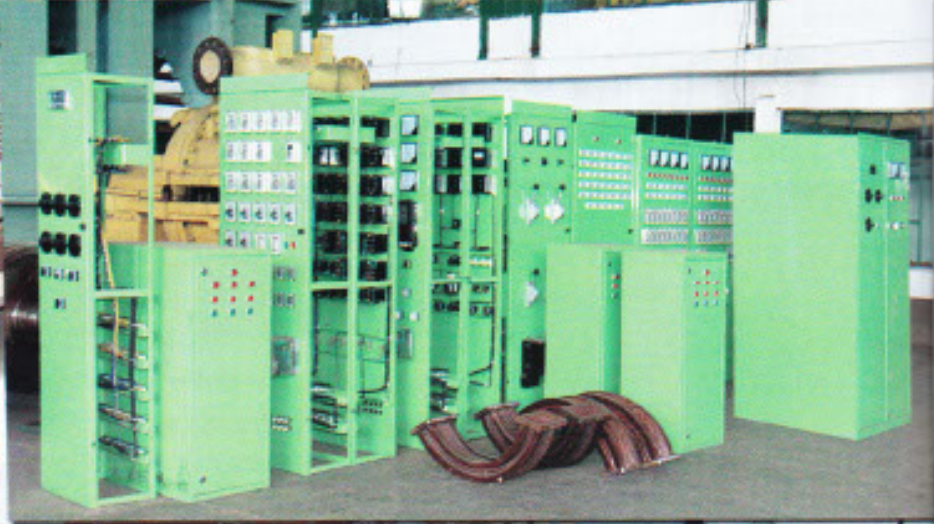
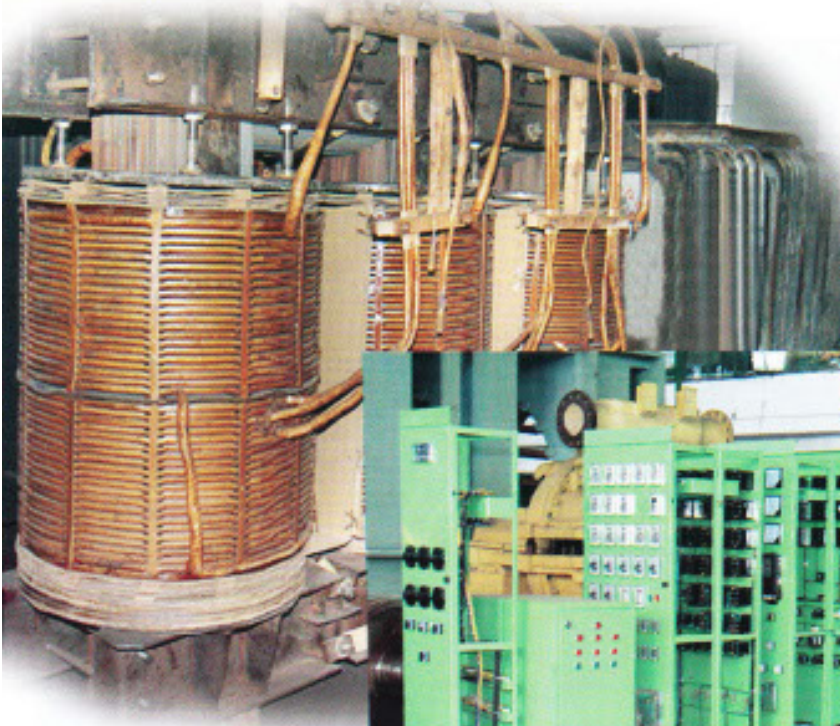




For more information, please contact:

**Korea General Machinery  
Trading Corporation**

Addr: Tongdaewon District,  
Pyongyang, DPR Korea  
Tel: 850-2-18111-3818102  
Fax: 850-2-3814495/3814410  
E-mail: kigye@co.chesin.com



The K  
cessing F  
turer of K  
products  
of life in  
Since  
1959, th  
pleted se  
reconstru  
on moder





# Kaesong Insam Processing Factory

The Kaesong Insam Processing Factory is a manufacturer of Kaesong Koryo insam products renowned as an elixir of life in the world market.

Since its establishment in 1959, the factory has completed several expansion and reconstruction projects based on modern technology.



The factory is producing Kaesong Koryo Natural Hongsam, Kaesong Koryo Paeksam, Kaesong Koryo Natural Insam in Honey, Insam Extract, Insamthang, Insam Women's Tonic, Kyongokgo, Sipjondaebogo, Insamboyang Pill, Insam Injection, Insam Tea, etc. in response to ever-increasing domestic and overseas demand.

Its products are made from Kaesong Koryo insam cultivated in Kaesong area, which is blessed with the most ideal soil, water and climatic conditions for insam cultivation.

They are enjoying popularity among the customers in foreign countries, particularly in Southeast Asian countries, as they are highly effective for the prevention of aging, promotion of health and prevention and treatment of many diseases.

Kaesong Koryo insam and its products are exported by the Korea Daesong No. 4 Trading Corporation.

**Korea Daesong No. 4 Trading Corporation**

Add: Pothonggang District,

Pyongyang, DPR Korea

Tel: 850-2-18111-3818129

Fax: 850-2-3814431





# Korea Ryonsung Joint Corporation



Joint Company, Ryonsung Technology Joint Company, Ryonsung Ikpong Joint Company, Hi-Fund International Bank and Sungri Exhibition Hall.

Its principal business includes production and export of building materials such as tiles, heat-proof steel plates, plastic boards, roofing plates and wainscoting, plastic windows and doors, development of software, and financial and commercial service.



The Sun, turning out floors, inte

The Sun, established kinds of s plastic bo building s sophisticated cially, heat are enjoyir clients for

It is now of product scoting, I heatproof and doors render cc manufactu to clients.

The Ry carrying of world econ science a architectur

The Korea Ryonsung Joint Corporation carries on extensively equity and contractual joint ventures in different fields of the economy with many countries all over the world.

The corporation is a united enterprise with subsidiary companies—the Sungri Roma Ceramics Joint Company, Sungri Building Materials Joint Company, Sungri Electricity





The Sungri Roma Ceramics Joint Company is turning out a wide variety of choice tiles for floors, internal and external walls.

The Sungri Building Materials Joint Company, established in 2003, is a supplier of diverse kinds of such building materials as heatproof plastic boards and steel plates, silicon and building stones produced on the basis of sophisticated science and technology. Especially, heatproof steel plates and plastic boards are enjoying popularity among local and foreign clients for their superior quality.

It is now in a position to manufacture varieties of products including heatproof composite wainscoting, heatproof composite roofing plates, heatproof plastic boards and plastic windows and doors. On order, the company is ready to render comprehensive services ranging from manufacture and sale of products to their design to clients.

The Ryonsung Technology Joint Company is carrying on research on the data of national and world economy, research and development of science and technology in IT industry and architectural design.

The company has under its control an economic research institute, a software development office and an architectural designing office so as to study global economy and trade, make architectural and interior designs and develop a rich selection of programs for industrial control, networks and multimedia.







The Hi-Fund International Bank serves various banking businesses like deposits, investment, issue of a bond, consignment sale, L/C settlement, remittance, bill discounting, issue of warranty for exchange control, storage of securities, letter of credit, credit inquiry and consultation for the convenience of visitors.

The Sungri Exhibition Hall opened in 2004 is a showcase of various building materials such as tiles, heatproof plastic boards and steel plates turned out at the Korea Ryonsung Joint Corporation. According to client's request, orders for them are available. The hall is furnished with adequate communal amenities and amusement facilities.

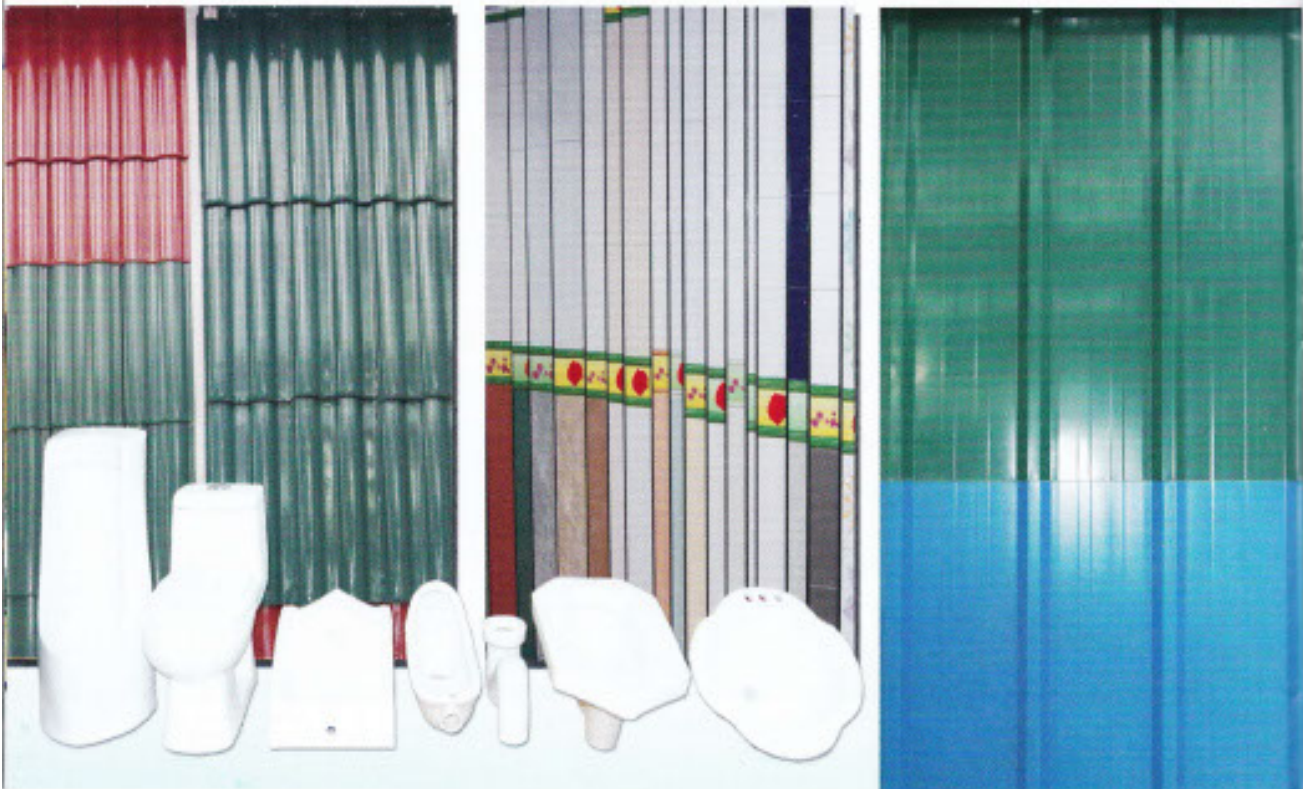
The Korea Ryonsung Joint Corporation is making endeavors to develop many-sided joint ventures with many countries around the world on the principles of mutual benefit and honoring contracts.

Please contact:

Add: Moranbong District, Pyongyang, DPR Korea

Tel: 850-2-18111-3818888/3818176

Fax: 850-2-3814692/3814652



At present every endeavor to develop a long-term relationship over 100 countries and Ocean trend of world and mutual

The government formulate the trade and economic

Trade relations are being expanded to foreign trade

The Diplomatic attention to and ties intergovernmental memoranda of implementation

All the engaged in corporate business expansion find their own products

The state committees handling trade subsidiary refineries, factories handicrafts increasing the internal steel sheet products, purpose and machines, ordinary and crucibles

The local



# ***Foreign Trade Making Rapid Progress***

At present, the DPRK government is making every endeavor to further expand and develop the relationship of trade and commercial exchange with over 100 countries in Asia, Europe, Africa, America and Oceania in conformity with the developing trend of world trade and on the principles of equality and mutual benefit and filling each other's needs.

The government has taken consistent measures to formulate the unified state system in the guidance of trade and carry on foreign trade in a planned way.

Trade relations with foreign countries and regions are being expanded with each passing day, making foreign trade multilateral and diversified.

The DPRK government is paying primary attention to the promotion of economic cooperation and ties with foreign countries according to intergovernmental trade agreements, contracts and memoranda, and doing its best for their correct implementation.

All the state-run and local trading companies, engaged in foreign trade in the capacity of a corporate body, are channeling their energy into the expansion of production and trade in an effort to find their way into world markets, relying on their own production bases.

The state-run trading companies organized by the committees, ministries and central organs are handling trade businesses under the backup of their subsidiary mines, iron and steel complexes, refineries, machine factories, light industrial factories and several production centers for handicrafts and agricultural produce. They are increasing the export of products in high demand on the international markets including iron and steel, steel sheets and plates, nonferrous metals and their products, high-performance CNC lathes, single-purpose and universal machine tools and many other machines, magnesia clinker, light-burnt magnesia, ordinary and special graphite and their electrodes and crucibles.

The local trading companies are widening the

horizon of their business, putting main stress on the export of the staple products in their respective provinces.

The state-run and local trading companies are promoting processing, reselling, barter, frontier, service and patent technology trades, international tender and auction, consignment, sales by agent, bonded processing and joint ventures with foreign trading firms and companies, which are bearing good fruit for both parties in business dealings.

The DPRK Chamber of Commerce and other executive units that are responsible for trade programs are making a tangible contribution to the development of the trade with foreign countries in keeping with the developing trend and environment of international trade and in close contact with the ICC and national chambers of commerce.

The DPRK General Bureau for Cooperation with International Organizations is in charge of opting for the cooperation candidates and projects, and budgetary allocations, management, implementation and coordination of the projects in liaison with UN organizations, as well as international and regional organizations.

The bureau is also contributing to the development of the national economy, science and technology in collaboration with non-governmental organizations in foreign countries.

It has so far played an important role in developing the economic relations between countries by successfully implementing national and regional cooperation projects offered by international organizations in various sectors of the economy including industry, agriculture, telecommunications, railway and air transportation, environment, public health and education.

The DPRK will, in the future, too, make best endeavors to develop multilateral economic cooperation and exchange with the countries all over the world.



# Summary of the DPRK Law on the Leasing of Land

The DPRK Law on the Leasing of Land was adopted by Resolution No. 40 of the Standing Committee of the Supreme People's Assembly on October 27, 1993, and amended by Decree No. 484 of the Presidium of the Supreme People's Assembly on February 26, 1999.

The law consists of 42 articles in 6 chapters.

## Chapter 1. Fundamentals (Articles 1-8)

This chapter stipulates that the mission of the law is to contribute to establishing a proper system in the leasing of land needed for foreign investors and foreign-invested enterprises and for use of the leased land.

A foreign corporate body or individual may lease and use land in the DPR Korea and the lessee has the right to use the land leased. When land is leased, natural resources and deposits in the land leased are not covered by the right to use land. The term of lease is fixed by agreement between the contracting parties within the limit of 50 years.

## Chapter 2. Ways of leasing land (Articles 9-14)

This chapter defines the ways of leasing land.

It stipulates that the leasing of land should be undertaken through consultation or by means of tender or auction. It also notes that the lessor should provide the lessee with the data like the location and area of the land and its topographical map, uses to which the land may be put, the building area, a plan for development of the land, the period during which construction must be completed and the minimum amount of investment required, the requirements for environmental protection, hygiene and anti-epidemics and fire prevention, the term of lease of the land and the state of development of the land.

The lessee must use land in accordance with the contract for use of land. A lessee who wishes to alter the use of land must conclude a supplementary contract with the lessor.

## Chapter 3. Transfer and mortgage of the right to use land (Articles 15-27)

This chapter stipulates that the lessee is permitted, with the approval of the lessor, to transfer (by means of selling, re-leasing, donation or inheritance) or mortgage to a third party the right to use a part or the whole of the land leased and defines in detail the problems arising in the transfer and mortgage of the right to use land.

It also prescribes the condition for transferring the right to use land, the limits of its transfer and the procedure for the sale of the right to use land.

The lessee is allowed to sell, re-lease, donate or mortgage the leased land only after paying the total amount of charge for transferring the right to use land stipulated in the contract for leasing the land and making the contracted investment. In case of the transfer of the right to use land, the rights and obligations relating to the use of the land, and the structures and other appurtenance on it, are also transferred.

When a lessee sells the right to use land, the lessor has the preferential right to buy it.

The chapter also notes that the lessee may re-lease the land leased observing due formalities and defines the procedures for mortgaging the right to use land.

A lessee may mortgage the right to use land with the purpose of obtaining a loan from a bank or other financial institutions. In this case the mortgagor and the mortgagee must conclude a contract for the mortgage in accordance with the terms of the contract for leasing the land. The two contracting parties must register the mortgaged right with the relevant lessor within 10 days.

If the right to use land is mortgaged, the structures and other appurtenance on the land are also mortgaged with the land. When concluding a contract for the mortgage, the mortgagee may request the mortgagor the contract for leasing the land, a copy of the transfer contract, a copy of the certificate for use of the land or other

information relating to the current state of the land.

The chapter defines the right of mortgagee when the right to use land is mortgaged as well.

The mortgagee may dispose of the right to use the land mortgaged by contract, as well as the structures and other appurtenance of the land in accordance with the mortgage contract if the mortgagor fails to pay the amount due by the expiry of the mortgage, or if business has been dissolved or gone bankrupt during the period of the mortgage contract. One who has won the right to use land and the structures and other appurtenance on it disposed of by the mortgagee must receive attestation from a notary office, register the change with the registration office and use the land in accordance with the contract for leasing the land.

The mortgagor is not permitted to remortgage or transfer the right to use land during the period of contract without the approval of the mortgagee.

## Chapter 4. Rent of land (Articles 28-33)

This chapter notes that the lessee must pay rent for the leased land to the lessor. When leasing developed land, the lessor will receive from the lessee the charge for transferring the right to use land plus the cost of land development. The lessee must pay the total amount of charge for transferring the right to use land within 90 days of signing the contract for leasing land. If the charge is not paid before the prescribed deadline, the lessor must demand additional payment equivalent to 0.1% of the overdue rent on a daily basis, starting from the first day of default.

A lessee who has been leased land through consultation or auction must pay to the lessor a guaranty equivalent to 10% of the charge for transferring the right to use land, within 15 days of the conclusion of the contract for leasing the land. The user of the land leased should pay annually land use charge. In this case, for those who invest in

priority sectors and trade zone reduced or exempted. Chapter 5. Rent

This chapter stipulates that the right to use land automatically expires at the end of the term of the contract. The lessor has the right to cancel the contract without compensation.

The chapter stipulates that the lessor has the right to cancel the contract for leasing the land, extension of the term of lease, the expense of cancellation of land.

## Chapter 6. Penalties (Articles 34-37)

This chapter

Jangmy  
It is a r  
human bo  
cancer, fin  
Jangmy  
Main li

Efficac  
Jangmy  
interferon.  
Jangmy  
mental fac  
Applica

- Im  
pro  
- Le  
dy  
- He  
- Pn  
- Pn  
dn

It is re  
Jangm



priority sectors and in the Rason economic and trade zone, land use charges may be reduced or exempted for up to 10 years.

#### **Chapter 5. Return of the right to use land (Articles 34-38)**

This chapter provides that the right to use land automatically returns to the lessor on the expiry of the term of the lease stipulated in the contract. The structures and other appurtenance on the land also return, without compensation being paid.

The chapter defines the procedure for canceling the registration of the right to use land, extension of the term of land lease, the expense for the withdrawal and clearance of the leased land and the cancellation of the right to use the leased land.

#### **Chapter 6. Penalties and settlement of disputes (Articles 39-42)**

This chapter specifies that if a lessee

illegally uses land without the certificate for the use of land, or changes the use of land or transfers or mortgages the right to use land without approval, he must be fined, have the facilities on the land confiscated or be required to restore the land to its original state, and the contract for transfer or mortgage be declared null and void.

The chapter also stipulates the ways of depriving the lessee of the right to use land, appealing to or filing a suit on it and settling the disputes.

In case of a failure to invest 50% of the total sum of investment during the period prescribed in the contract for the leasing of land, or to develop the land as contracted, the lessee may be deprived of the right to use land.

If the lessee disagrees with the penalty imposed on him, he may appeal to an institution senior to the one that has

imposed sanctions or file a suit with an appropriate court within 20 days of the receipt of the notice of penalty.

Disagreements arising in leasing land or transferring and mortgaging leased land to a third party must be settled through consultation.

In case of failure in consultation, they must be settled through arbitration or legal procedures provided by the DPRK, or may be taken to an arbitration body in a third country for settlement.

The DPRK Law on the Leasing of Land contributes to establishing a proper system and order in the leasing of land needed for foreign investors and foreign-invested enterprises in order to secure their investment and activities.

Kim Un Gyeong, the legal institute of the DPRK Academy of Social Science

## **JANGMYONG**

Jangmyong, immunity-control polysaccharide, is a health food that improves the immunity of human body.

It is a natural health food made on the basis of the principle that the improvement or adjustment of immunity of human body is a key to the prevention and treatment of physiological aging process and various diseases such as cancer, finding their pathogenesis in the depression of immunity.

Jangmyong is prepared from highly active polysaccharide extracted from natural mushroom.

*Main ingredients:*  $\beta$ (1,3) (1,6) D-Glucan, polysaccharide extracted from natural mushroom.

Jangmyong contains 0.1g of polysaccharide per tablet.

#### *Efficacy:*

Jangmyong revives marrow, thymus and spleen to increase and stimulate T-cells ( $T_H$ ), NK-cells, phagocytes and interferon. Therefore it is efficacious for the improvement of immunity.

Jangmyong also activates hypophyseal function to get rid of headache of the aged and the sick and to improve the mental faculty.

#### *Application:*

- Improvement of the immunity of the aged to various diseases and prevention of energy reduction and aging process
- Leukopenia, pernicious anemia, nephritis, chronic hepatitis and autonomic nervous disorder due to the dysfunction of immunity
- Headache due to various reasons including the residual symptoms of cerebral concussion
- Prevention and treatment of cancers such as cerebral tumor and their relapse
- Prevention of body damage caused by the prolonged radiotherapy and application of chemical anti-cancer drugs

It is recommended to always keep Jangmyong at home as its regular administration prevents various diseases.

Jangmyong has no contraindications and side effects.

#### **International Products Promotion Company**

Add: Central District, Pyongyang, DPR Korea

Tel: 850-2-3818833

Fax: 850-2-3814410



# KCC Taking a Big Step Forward

"The year 2006 was a year of great turning point in the promotion of foreign trade," says Ri Song Un, vice-president of the Chamber of Commerce of the DPR Korea.

Ri points out two major successes achieved last year:

The first one is the increased membership and extensive exchange with foreign enterprises.

In 2006, the KCC recruited over 10 domestic trading companies and trade-related enterprises while conducting certification of incorporation and external authentication of more than 140 companies so as to consolidate the foundation for the promotion of trade activities.

Trade and investment seminars for introducing the trade activities and investment policy and their environment in the DPRK were held for foreign businessmen on several occasions including the 9<sup>th</sup> Pyongyang Spring International Trade Fair and the first visit of the exchange group of golf enthusiasts to Pyongyang.

Besides, the quarterly journal "The Foreign Trade of the DPRK" played an active role in refreshing the knowledge of foreigners in the trade activity and investment in Korea.

The second major success is the cemented relationship with chambers of commerce in foreign countries.

A training course was sponsored by SGS and the establishment of the SGS Pyongyang Office is in progress under the agreement on proxy inspection of export and import goods inked between the KCC and SGS.

These successes have brought about the further development of relations between the KCC and its member companies and the national and regional chambers of commerce, and their member enterprises, thus making a greater stride in the promotion of trade and investment.

Saying that much attention is paid to make trade multilateral and diversified this year, too, Ri notes that the KCC will concentrate its efforts into making a breakthrough in activating trade and investment.

This year the KCC will build up a closer relationship with foreign chambers of commerce, broaden the channels of cooperation and exchange and take every opportunity to promote trade and investment.

Particular prominence will be given to the expansion of trade with Southeast Asian countries and European countries including Italy.

In this connection, a business seminar was held in March this year under the co-sponsorship of the KCC and the chamber of commerce in Piemonte Province, Italy. The seminar served as an excellent lever for encouraging trade activities and investment.

The KCC, aiming at rendering services for the inroads into the world markets, exploitation of export outlets, joint ventures and investment attraction to domestic trading corporations and companies, is pushing forward with joint ventures and exchange with France and many other countries in various fields of the economy: production of building materials, paints, elevators and small-sized tractors, stone dressing, furniture, the export of coal and import of coke.





## Kumintungunal (pill)

*(Traditional Koryo Medicine)*

*Composition:* Active mineral nutritive elements, Herba Artemisiae, pearl, etc.

*Indications:* Hepatitis, hepatocirrhosis, hepatic dropsy, fatty liver, early cancers, duodenal and peptic ulcer, indigestion and abiosis of children

*Dosage (for adult):* Take one pill after meals three times a day.

There is no contraindication.



## Tetrodocain Injection

*Composition:* Tetrodotoxin

*Effect:* Strong antibiotic effect (6 times higher than penicillin and streptomycin)

Strong analgesic effect (10,000 times higher than morphine)

Special effect for detoxification of dope

*Indications:* Tuberculosis (lymphatic tuberculosis), pneumonia, pleuritis, pericarditis, influenza, spinal diseases, neuralgia, tracheal inflammation and medical poisoning

## Pibior-1

*(Natural biological injection)*

*Indications:* Immuno deficiency disease, asthenia, autonomic imbalance, cardioneurosis, diabetes, endocrine dysfunction and hepatitis

**Korea Jangsaeng J-V Company**

Add: Taedonggang District, Pyongyang, DPR Korea

Tel: 850-2-18111-3818979

Fax: 850-2-3814410





# Korea Sonbong General Corporation

The Korea Sonbong General Corporation is a state-run trading organ supported by reliable production bases for export.

The export items are clothes, pressed cotton, tissue paper, software, cemented carbide tools and foodstuffs, and

the import ones are equipment and materials for garment and foodstuff production and goods for commercial service.

The corporation has under its control the Korea Rungra J-V Co., Myohyangsan J-V Co., Sonbong Export & Import Corporation, Phyongje Corporation, Sonbong-Promotra J-V Co., Sonbong Export & Import

Exchange Center, Sonbong Commerce & Trade Exchange Center, Aeguk Moran Garment Factory, Jangsan Export Goods Factory and Wonsan Sea Transport & Export-Import Enterprise.

Garments and foodstuffs, the major export items, have a long-standing history of production and guarantee high quality.

Equity and contractual joint ventures are encouraged to expand the production centers for exports and increase their variety.

The Sonbong Export & Import Exchange Center producing minerals by means of advanced dressing technology is coming into the limelight as a promising

and lucrat  
prise.

The Sont  
is thronged  
only a sho  
and other p

fair for exp

Commerc  
up a grea  
turnover of

The Sor  
Co. has set  
service ce  
luxury furr  
such as

brand win  
The Phyc  
selling age





and lucrative business enterprise.

The Sonbong Exhibition Hall is thronged with visitors as not only a showcase for garments and other products, but the trade

Swiss watches, jewellery and ironware.

Chartering of cargo ships and transport business by heavy-duty trucks are also in full swing.

The Korea Sonbong General Corporation intends to consolidate export production bases and continue to expand exchange and cooperation with foreign countries.

President Jo Myong Yong



fair for export products.

Commercial service is taking up a great share in annual turnover of the corporation.

The Sonbong-Promotra J-V Co. has set up a big commercial service center whereby selling luxury furniture and foodstuffs such as famous European brand wines.

The Phyongje Corporation is a selling agent for world-famous



Add: Moranbong District,  
Pyongyang, DPR Korea  
Tel: 850-2-18111-3818136  
Fax: 850-2-3814410/3814416  
E-mail: kwa@co.chesin.com





# Products from PGI



## - Bean-flour milk powder enriched with calcium

Main ingredients: soybean, milk powder, hop, vegetable oil, sugar, calcium lactate

Nutritive value: 1,500kJ/100g

Nutritional facts per 100g:

Fat	9.03 g	Protein	17.4 g
Calcium	350 mg	Carbohydrate	5.5 g
Zinc	1.31 mg	Iron	2.14 mg
Vitamin B <sub>1</sub>	100 µg	Edible fiber	380 mg
Vitamin B <sub>2</sub>	100 µg	Nicotine	1 mg
Vitamin E	4 mg		

Vitamin B

Vitamin C

Pyongyang

Add: Son

Fax: 850-



## - Functional glucose

Main ingredients: glucose, calcium, complex vitamins, minerals

Nutritional facts per 100g:

Vitamin A	1,500 IU	Vitamin D <sub>2</sub>	300 IU
Vitamin K <sub>2</sub>	50 µg	Vitamin B <sub>1</sub>	0.4 mg
Vitamin E	12 mg	Vitamin B <sub>2</sub>	0.3 mg
Biological nutriment	1.5 µg	Vitamin B <sub>12</sub>	1.5 µg



## - Nutritive oat powder

Main ingredients: oat, egg, milk powder, cream, flavoring, calcium, sugar, oat essence

Nutritive value: 1,540kJ/100g

Nutritional facts per 100g:

Fat	42 mg	Protein	5 g
Calcium	180 mg	Carbohydrate	76 g
Vitamin D	4 µg	Iron	1 mg
Vitamin B <sub>1</sub>	20 µg	Nicotine	30 mg





# PGFJC

Vitamin B <sub>2</sub>	10 µg	Zinc	1.2 mg
Vitamin C	10 µg	Vitamin E	80 µg

Pyongyang General Foodstuff Joint Corporation  
 Add: Songyo District, Pyongyang, DPR Korea  
 Fax: 850-2-3814410/3814416





# Korea Songaksan Trading Corporation



The Korea Songaksan Trading Corporation is a local trader engaging in the trade business with foreign countries based on the economic foundation of Kaesong City in the DPR Korea.

Since its floatation in 1976, the corporation has systematically expanded the business scope, and now it has contact with over 50 trading firms across the world.

Tens of modern export production centers, several joint venture enterprises and service facilities are under the control of the corporation.

The production capacities of the garment processing factories are enormous.

The Kaesong Aeguk Garment Factory, Songdo Garment Factory and Songaksan Garment Factory are producing various fashionable garments including suits, coats, jumpers, padded clothes, sportswear, trousers and children's clothes in conformity with the technical standard requested by foreign orders.

These factories are equipped with up-to-date sewing machines so that they have a large order for bonded processing thanks to their strict adherence to contractual obligations.

The Koryo Embroidery Factory, Pongdong Embroidery Factory and Koryo Craftwork Studio are creating a wide range of embroideries, craftworks, souvenirs and fine arts in peculiar style highly appraised in international markets.



18

The corp  
platycodon,  
species of r  
taste and ar  
Tourism is  
Kaesong r  
Korea for ab  
there are  
associated  
every corne  
The Maus  
Kingdom, I  
Songgyung  
in 992, Ryo  
Dynasty, M  
loyalty are t  
long space r





The corporation also exports health foods like raw platycodon, bracken, osmund, aralia shoots and various species of mushrooms, all of which are featured by unique taste and aroma and high nutritive value.

Tourism is a major business of the corporation.

Kaesong was the capital of Koryo, a unified state existed in Korea for about 500 years between 918 and 1392. Therefore, there are Koryo Museum and other historical relics associated with the resources and talent of our nation at every corner in the city.

The Mausoleum of King Wang Gon, the founder of Koryo Kingdom, the Mausoleum of King Kong Min, Koryo Songgyungwan, the highest educational institute established in 992, Ryongthong Temple built in the early days of Koryo Dynasty, Marwoldae, Sonjuk Bridge and Monuments to loyalty are the tourist attractions preserving venerability for a long space of time.



The corporation is running service facilities including Kaesong Thongilwan, Kaesong Folklore Hotel and souvenir shops for the convenience of foreign tourists.

The Korea Songaksan Trading Corporation is encouraging joint ventures with foreign partners.

The Kaesong Building Materials Joint Corporation, Kaesong Koryo Commercial J-V Co., Kaesong Tourist Service J-V Co. and Kaesong Koryo Foodstuff J-V Co. are turning out building materials, ceramic wares, local and agricultural produce, Kimchi and insam products for export.



Add: Naesong-dong, Kaesong City, DPR Korea  
Tel: 850-2-18111(EXT) 049-35-0502  
Fax: 850-2-381-4410-049-35-0901





# Light Ring of Natural Calcite

The gorgeous ring has a miraculous effect on human health.

Natural calcite is composed of pure calcium carbonate ( $\text{CaCO}_3$ ).

The ring produces an electronic wave by the penetration of the sunlight or artificial light through its polarizer.

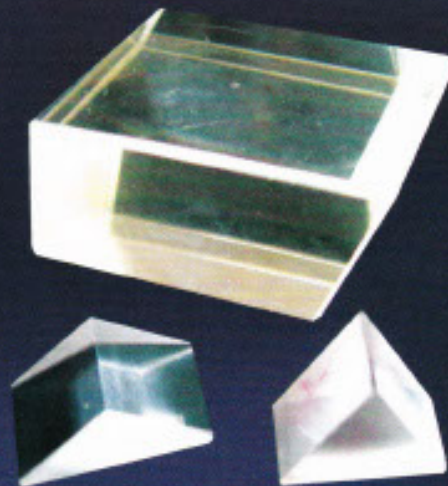
Its biophysical microaction stimulates the light sensors in a human body, strengthens lymphatic activity and activates enzymes in cells, thus contributing to the treatment of many diseases.

In addition, it raises the content of plasmin in the inert condition, resulting in lowering the factor of blood coagulation.

#### Therapeutic effect

- Improvement in physical and mental ability, particularly in thinking power and memory
- Prevention and treatment of various neuralgia and epidermal diseases
- Prevention of aging and promotion of cell regeneration by raising immunity

It is popular among customers as it provides people with sound health and vitality and is efficacious for prevention and treatment of many diseases.



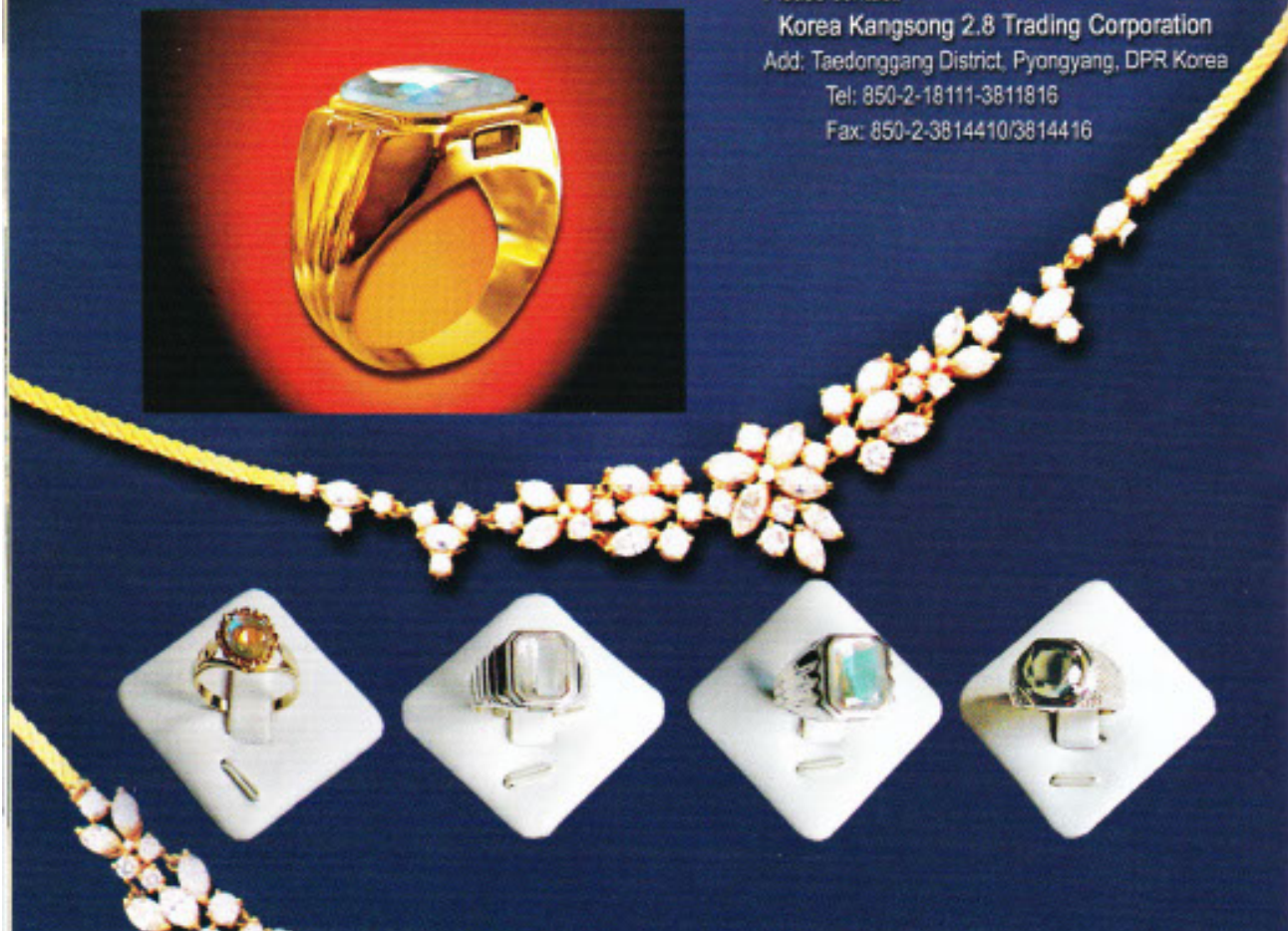
Please contact:

Korea Kangsong 2.8 Trading Corporation

Add: Taedonggang District, Pyongyang, DPR Korea

Tel: 850-2-18111-3811816

Fax: 850-2-3814410/3814416



JINUY

We pr

-

-

-

-

-

-

-

-

-

-

-

-

-

-

-

-

-

-

-

-

-

-

-

-

-

-

-

-

-

-

-

-

-

-

-

-

-

-

-

-

-

-

-

-

-

-

-

-

-

-

-

-

-

-

-



# *Open Up a New World of IT with Us*

JINUNG is a professional developer and exporter of software for various purposes.

We present you the brief outline of our software development.

- Windows applications including anti-virus software
- Video on demand systems
- Communication software
  - Image/voice transmission programs, TV systems
- Management system for Office documents
  - Browsing, revising, copying and printing of office documents can be managed on a network.
- PC management system
  - The system can monitor the use of PCs in offices like browsing of documents or web pages, playing of games, music or video files, and printing of files.
- Simulation software employing DirectX real-time 3D CG technology
- ERP (Enterprise resource planning) package
  - All kinds of businesses in an enterprise like management of production, sales and personnel and accounting can be integrated into one database, a single software package.
- Educational and game software
- Flash contents for juvenile education, safety education and so on
- Simulation games
  - Chess, chequers, Othello, mah-jongg and other board games can be developed to run in PCs, game machines, mobile PCs or cellular phones.
- Introduction of still-image content distribution system with content security system on a license contract
- Special effect plug-ins for 3D CG tools like 3ds max, Maya and Lightwave
- 3D CG media including cartoons, SFX shots, titles, advertisement presentations
- Construction of clustering system and transfer of its operational skill and offering of know-how in programming parallel calculation software that carries out large-scale scientific and technological calculation on a clustering system
- Customization of Linux system in memory, communications and task management
- Development of Real-time Embedding Linux system and its kernel, real-time performance test tools, various startup applications, communications protocols and Windows environment and porting of optimized Linux system on built-in boards
- Development of technologies for IC design, OS porting, startup applications and onboard systems employing digital signal processing technology

For more details, please contact:

**Korea Jinung Trading Corporation**

Add: Taesong District, Pyongyang, DPR Korea

Fax: 850-2-3814410

E-mail: jinung@co.chesin.com



# Cooperation and Exchange Making Headway

The Koryo Association for the Promotion of Economic Cooperation is a consultative organ intending to expand cooperation and exchange for investment in economy and trade at home and abroad in line with the developing trend of global and national economy.

Its business scope comprises economic cooperation and exchange as well as information exchange in various fields, ranging from commerce, technological development, manufacturing and selling of products, domestic/overseas construction, investment in hotels and department stores and their management, stock-farms, marine transport, clothing, foodstuff processing, building-materials technology and development of commodities to fisheries, tourism, banks, sports and culture.

It renders business services for introducing the items of mutual concern related to investment projects and commercial development to the local economic and trade investment organizations, and providing them with business consultations necessary for cooperation.

It also engages in businesses to enliven the exchange of economic and marketing information between domestic and foreign entrepreneurs and provide services for cooperation, consultation and

brokerage to foreign enterprises that are interested in trade, investment and commercial development with local ones.

Besides, it functions as a counselor for the inroads of foreign enterprises into domestic market and their business transactions and as an agency or branch office for management and operation of enterprises established by foreigners.

The secretarial department employs a number of competent specialists in charge of economic cooperation and exchange, economic information service, commercial development, management of enterprises, promotion of trade and agent business.

The association will make positive contribution to expanding and developing trade relations with foreign countries by conducting wide-ranging cooperation and exchange with them.

Chief secretary Kim Chol

## **Koryo Association for the Promotion of Economic Cooperation**

Add: Yanggakdo International Hotel, Central District, Pyongyang, DPR Korea

Tel: 850-2-18111-3818136

Fax: 850-2-3814842

E-mail: kadgmn@silibank.com

## **Koryo-Global Credit Bank**

The Koryo-Global Credit Bank was set up in June 2005 between the Koryo Bank of the DPRK and the Global Bank of the United Kingdom.

The bank situated on the picturesque Taedong River is enjoying a great reputation among domestic and foreign clients for its diverse, effective and beneficial service.

It offers favorable banking services such as high-rate deposits, prompt and accurate remittance, recommendation and management of investment on the promising projects, trust for marked increase of net income, firm security sale of stocks and bonds, foreign currency exchange, settlement of import and export goods, treasure storage, etc.

Fund supply for nonresidents with passports and travel cheques are providing businessmen and travelers to Korea with a great convenience.

The bank continues to improve its role by constantly collecting and analyzing the reality of Korea and the global economic information.

It is winning the credit from foreign enterprises and their branches, and joint venture companies in Korea as well as the banks and enterprises in foreign countries.

The Koryo-Global Credit Bank is doing its best to further activate banking services in conformity with the modern trend.

President: Simmy Ho

Vice president: O Chol Hun

Add: Central District, Pyongyang, DPR Korea

Tel: 850-2-3814100 Fax: 850-2-3814013

E-mail: kgbankpy@co.chesin.com

Swift: KGCBKPPY

The N  
Standardiza  
is the hub o  
country,  
economic  
people's we

Since its  
the NIS h  
activities i  
of standard  
training o  
service  
international

The NI  
efforts int  
significant  
the sci  
standardiza  
role of nati

It is also  
developmen  
standardiza  
fundamenta  
theories a  
books.

Advertis

The Gl  
represent  
relations l

The off  
of the Gl  
sports, ar

At pres  
Taking at  
economic  
its prin  
parts.



# National Institute for Standardization of the DPRK

The National Institute for Standardization of the DPRK (NIS) is the hub of standardization in the country, contributing to the economic development and people's well-being.

Since its establishment in 1949, the NIS has engaged in various activities including the enactment of standards, scientific researches, training of experts, information service on standards and international exchange.

The NIS is concentrating its efforts into solving realistic and significant problems for securing the scientific level of standardization and enhancing the role of national standardization.

It is also paying attention to the development of education on standardization by formulating fundamental problems of its theories and writing them into books.

Advertisement and information

service of the standardization are important means for its successful progress.

The NIS is doing its best to impart wide knowledge of the effectiveness of standardization to the people through the media of publications, TVs and radios.

It is publishing a rich selection of publications, including periodicals like "Metrology & Standardization" and "News in Standardization" and standard handbooks of various fields while providing information service through standard information database to ministries, central organs, factories and enterprises, universities and scientific research centers.

All its activities are oriented towards the completion of the standardization system and the promotion of the nation's information industry in accordance with the needs of IT age.

The computer network "Raeil" has been established and many new standards introduced into the IT sectors.

The NIS is acting as the secretariat of the Association for Marking the Classification of Goods of the DPRK.

The DPRK has entered the ISO in June 1963 and the IEC in October the same year and is active as a member of the relevant technical committees.

The NIS is promoting wide-ranging exchange under the agreements signed with standardization bodies and research institutes in different countries.

It is making a considerable contribution to the promotion of standardization on an international scale as well as in developing countries, and sponsoring the international courses for training experts in the management of standardization and metrology.

## Global Group Pyongyang Office

The Global Group Pyongyang Office (Global-PYO) is a legal branch office established in the DPRK as a field representative agent of the body corporate of the Global Group in the UK in July 2004 with a view to promoting economic relations between the DPRK and UK.

The office undertakes the cooperation in the management of the Koryo-Global Credit Bank, the first investment project of the Global Group in the DPRK, the investment and consultant service for mining industry and physical culture and sports, and many-sided export and import businesses.

At present, the Group has representative offices and branches in Beijing, Shanghai, Guangzhou and Hong Kong. Taking advantage of these favorable conditions, the office is channeling its major efforts into the promotion of trade and economic exchanges with China, the neighboring country of Korea.

Its principal export items are minerals and metal products and the import items are building materials and automobile parts.

Manager: Sin Su Ok

Add: Central District, Pyongyang, DPR Korea

Tel: 850-2-3814300

E-mail: suok@co.chesin.com



# Paint Production and Export on the Upswing

The Korea Hungsong Trading Corporation, Korea Myongso Trading Corporation, Kyongryong J-V Co. and Mujigae Contractual Joint Venture Company are paying best endeavor for developing new kinds of paints for exterior and interior of buildings, furniture and ships as their principal export items and raising their production and export.

Much attention is being focused on production of various paints low in manufacturing cost, diverse in color and excellent in anti-corrosive, anti-fouling and adhesive effects. A wide range of paints are available, including those for metal fittings with excellent water, heat, oxidation, weather and corrosion resistance and quick hardening of coated layer at normal temperature and those for decoration of exterior and interior of buildings with superior moisture and corrosion resistance.

The paint "HYONMU" of the Korea Hungsong Trading Corporation is the product developed through years of painstaking research on zinc-silicate layer, based on the data for mural painting "Hyonmu" of Koguryo period with a history of thousands of years.

Unlike ordinary paints, "HYONMU" is a new functional paint that forms an "active film" by the electrochemical and mineralogical reaction. It is also a pollution-free paint as a natural inorganic compound which is highly adhesive to steel surface, hard and not fragile, thus enduring the contraction and expansion of metals.

The regular deposit tests in seawater and test painting on some 100 vessels and buildings between 1993 and 2004 gave ample proof of its superiority. It is awarded a gold medal in the 22<sup>nd</sup> Geneva International Invention and New Technology Exhibition, patented as a paint of great practical value in Germany and registered as a brand product of "HYONMU" in Great Britain and some other countries.

The Korea Myongso Trading Corporation is a producer of plastic paint made from vinyl acetate latex and acrylic latex as a vehicle and the new type of high polymer dispersing agent that ensures smooth painting surface and exhibits high resistance to moisture.

As paint for roofing slates and interior and exterior of buildings, it is highly appraised by customers for its short drying time.

The Mujigae Contractual Joint Venture Company has introduced nano technology into the production of its "MUJIGAE"-brand varnish, enamel, lacquer and lacquer enamel so that they are featured by minute grain size, fine luster and vivid colors.

Its production centers are equipped with high-precision and know-how processes including pneumatic ultrafine pulverizers, automatic feeders, high-speed mixers and automatic packing machines.

The company is paying its primary attention to the development of new products and the research for supplying painting materials and additives, relying on the abundant natural resources.

The paint producers are promoting the exchange and cooperation with foreign partners in joint development, investment, production and sales of paints.

For more information, please contact:

**Korea Hungsong Trading Corporation**

Add: Mangyongdae District, Pyongyang, DPR Korea

Tel: 850-2-18111-3818888

Fax: 850-2-3814629

E-mail: hungsong@co.chesin.com

**Korea Myongso Trading Corporation**

Add: Central District, Pyongyang, DPR Korea

Tel: 850-2-18111-3815926

Fax: 850-2-3815827

E-mail: myongso@silibank.com

**Kyongryong Joint Venture Company**

Add: Phyongchon District, Pyongyang, DPR Korea

Tel: 850-2-18111-3818330

Fax: 850-2-3814410

**Mujigae Contractual Joint Venture Company**

Add: Raknang District, Pyongyang, DPR Korea

Tel: 850-2-18111-3818358

Fax: 850-2-3814410

The Kyo  
long histor  
of soft dri  
The mil  
projects f  
and the qu  
The wh  
from bottl  
packing a  
Quality  
processin  
materials  
sterilizati





# Kyongryon Aeguk Soda-pop Mill

Kyongryon Aeguk Soda-pop Mill has a long history and big capacity in the production of soft drinks.

The mill has so far undertaken several projects for upgrading production equipment to improve the quality of products.

The whole production processes ranging from bottle washing, bottling and inspection to packaging are conducted on a flow line.

Various soft drinks are produced by strict quality control methods including mixture of raw materials, coarse and fine filtering and carbonation.



The products comprise carbonated drink, the main product of the factory, soda water and powdered soda pop. The carbonated drink contains 8% of sugar, citric acid, essence and carbon dioxide.

The mill is also planning to further increase the output and variety of fruit juice like apple juice and pear juice in order to meet the ever-increasing demand for soda pop.



DE  
2





# Kaesong – A Tourist Attraction of Korea

Kaesong was the capital of Koryo (918-1392), the first unified state of Korea, and is the home of Koryo insam.

It is bound on Panmunjom and the military demarcation line, a symbol of the tragic division of Korea forced by outside forces in the mid-20<sup>th</sup> century.

There are a lot of historic relics

preserving the true aspects of the old capital in Kaesong.

The tour to Kaesong is divided into four courses: the metropolitan area, Panmunjom, mausoleums of Koryo kings and Pakyon area.

## **Metropolitan area:**

Manwoldae, the remains of the royal palace of Koryo that stood throughout the existence of the

kingdom built in its early days, is situated on the southern foot of Mt. Songak. Besides, there are a lot of historic relics: Koryo Songgyungwan, the highest academic institute of Koryo, the bell of Yonpok Temple in Nam Gate, Ryongthong Temple erected in the early days of Koryo Dynasty, Sonjuk Bridge, Sungyang Lecture Hall, Kwandok Pavilion, etc.

## **Mausoleums of Koryo kings:**

They are the tombs of King Wang Gon, the founder of Koryo, and King Kong Min, the 31<sup>st</sup> King of Koryo.

## **Pakyon area:**

The tour leads you to a mysterious and harmonic combination of nature and culture: Pakyon Falls, one of the



three famo  
Kwanum Te  
Koryo perio

## **Panmunj**

Panmunj  
DPRK and  
stice agree  
(June 1950-

Tourists c  
the armist  
armistice ag  
the meetin  
Armistice C  
concrete wa  
south Korea  
tary demar  
240 km.

Tourists c  
customs a  
Korean pec



three famous waterfalls in Korea, Kwanum Temple and other relics of Koryo period.

**Panmunjom:**

Panmunjom is the place where the DPRK and the US signed an armistice agreement after the Korean War (June 1950-July 1953).

Tourists can see the rooms where the armistice talks were held and the armistice agreement was signed and the meeting hall of the Military Armistice Commission, as well as the concrete wall built by the US and the south Korean regime along the military demarcation line extending to 240 km.

Tourists can experience both the customs and hospitality of the Korean people in Kaesong Folklore

Hotel composed of the refashioned dwelling houses of Ri Dynasty (1392-1910), Janamsan Hotel, Thongil Restaurant and Ryongthong Restaurant serving Korean traditional dishes.

For more details, please contact:

**DPRK State General Bureau of Tourism**

Add: Phyongchon District,  
Pyongyang, DPR Korea  
Tel: 850-2-18111-18999 (Ext) 8283  
Fax: 850-2-3814407  
E-mail: [kic-1@sillibank.com](mailto:kic-1@sillibank.com)





# Pyongyang Condiment Factory

With a long history, the Pyongyang Condiment Factory is producing a wide variety of condiments including soybean paste and soy sauce indispensable for the dietary life of the Korean people.

The factory is well furnished with production processes with a big capacity to mass-produce such condiments as soybean paste, soy sauce, monosodium glutamate and edible oil.

All the processes are streamlined from raw material feeding to quality inspection and packing while the production sites and facilities are fully satisfying the requirements of hygienic conditions.

With the introduction of advanced science and technology into the production processes like mixing and fermentation, the factory is doing its best to improve the quality of products and preserve the traditional taste of Korean soybean paste.

In addition, the variety of products is on the increase.

Soybean paste is divided into ordinary, high-grade, red-peppered, vinegary and meat soybean paste. Red-peppered one (868kJ/100g) is made of soybean, red pepper, sugar and sesame.

Soy sauce is also divided into ordinary, high-grade, vinegary and garlic soy sauce. High-grade soy sauce unique in taste and color is composed of protein (12.6%), oil (0.4%), sugar (10%), amino nitrogen (0.65%) and salt (18%).

Other condiments such as monosodium glutamate and soybean oil are enjoying ever-increasing popularity for their excellent quality.

The factory is concentrating its effort on upgrading the production processes, diversifying the products and further improving their quality in order to play a bigger role in the betterment of people's food life.



Ko

The Korea O Center engage various medic introducing the for organic sy and medicinal f The center is varieties of mex made from medicinal herf Kaesong Kory Mt. Paektu, Ep



The product pharmacologic safety, thus standard and many countries With a rich e nal research high technolog center hopes cines with fore tion on order based on the s efficacy. We introdu products:



# Korea Oriental Instant Medicinal Center

The Korea Oriental Instant Medicinal Center engages in the development of various medicines and health foods introducing the up-to-date technology for organic synthesis, bioengineering and medicinal herb processing.

The center is in a position to export varieties of medicines and health foods made from the world-renowned medicinal herbs in Korea, such as Kaesong Koryo insam, wild insam of Mt. Paektu, Epimedium and Ganoderma.



The products are featured by high pharmacological efficacy and absolute safety, thus receiving the national standard and quality certifications in many countries.

With a rich experience in the medicinal research and development and high technology in pharmacology, the center hopes joint ventures in medicines with foreign partners, the production on order and the sale of patent based on the strict examination of their efficacy.

We introduce you some of its products:

## Neo-viagra-Y.R.

**Composition:** Active peptide that promotes sexual function, crude prostaglandin A, B, C —reviving elements of sexual function, 11 kinds of herbal extracts and bioactive polysaccharide.

**Indications:** Prolongation of sexual intercourse, lumbago, pain in shoulder, arthralgia and renal dysfunction.

## Angung Musk

**Composition:** Effective ingredients of musk, bezoar, pearl, cinnabar and 8 kinds of herbal extracts.

**Indications:** Cerebral arteriosclerosis, cerebral thrombosis, sequela of cerebral concussion, etc.



## Blood purifier

**Composition:** 5 kinds of herbal extracts for the dissolution of deposits and 3 kinds of herbal extracts for revitalization of nerve and cells.

**Indications:** Cerebral arteriosclerosis due to hyperlipemia, obesity and hepatic dysfunction.

Add: Songyo District, Pyongyang, DPR Korea

Fax: 850-2-3814410/3814416



valid till 10 February 2006





# Paint "HYONMU"

## - SZ and ST series

They are good for the protection of a ship's bottom and structures at sea with excellent features of quick hardening of waterproof coat layer at normal temperature and strong *Innoxious, anti-corrosive and anti-fouling effects.*

## - SR series

They are effective for the prevention of thermal oxidation of steel structures at extremely high temperature of up to 1,000°C.

## - SO series

They are high quality paints for protection and decoration of hardware featured by weather resistance and anti-corrosive affects.

## - SD and SB series

They are applicable to interior and exterior decoration of buildings.

Korea Hungsong Trading Corporation  
Add: Mangyongdae District, Pyongyang, DPR Korea  
Tel: 850-2-3818888  
Fax: 850-2-3814629  
E-mail: hungsong@co.chesin.com



The Pyon  
Factory is  
cable manu  
of-the-art te

Its optical  
sound and  
because the  
capacity an  
of electron

The facto  
optical fiber  
fiber single  
and bundle  
optical fiber





# Pyongyang Optical Fiber Cable Factory

The Pyongyang Optical Fiber Cable Factory is a professional optical fiber cable manufacturer based on the state-of-the-art technology.

Its optical fiber cables can transmit sound and image data simultaneously because they have a big transmission capacity and are free from the jamming of electromagnetic field.

The factory turns out two kinds of optical fiber cables: single-core multi-fiber single-mode optical fiber cables and bundle-core jelly-filled single-mode optical fiber cables.

## Specifications

### - Single-core multi-fiber single-mode optical fiber cables

Number of fiber	4-12
Weight	140kg/km
Diameter	12.5mm
Min. bending diameter	30cm
Max. tensile strength	1,000N
Length	2,100m

### - Bundle-core jelly-filled single-mode optical fiber cables

#### ↳ 6-line cables

Number of fiber	4-12
Weight	220kg/km
Diameter	15.5mm
Min. bending diameter	30cm
Max. tensile strength	1,000N
Length	2,100m

#### ▪ 12-line cables

Number of fiber	1-12
Weight	390kg/km
Diameter	20.5mm
Min. bending diameter	40cm
Max. tensile strength	2,500N
Length	2,100m

The optical fiber cables manufactured at the factory are finding an effective use in long-distance communications thanks to their excellent features of small data loss and broad band in wavelength of 1.3 and 1.5mm.

The factory's products are exported by the Korea Chesin Trading Corporation.

Please contact:

Add: Central District, Pyongyang,  
DPR Korea

Tel: 850-2-18111-3818735

Fax: 850-2-3814442





# Korea National Land & Environment Trading Corporation

Established in 1985, the Korea National Land & Environment Trading Corporation is a trading organ representing overall trading activities in the sector for the protection of the DPRK's national land and environment.

It is promoting trade, exchange, cooperation and investment with international organizations and trading companies in the domains of national land and environment including forests, roads, rivers and environment.

Efforts are being made to cultivate and export fine species of trees and their seedlings for city greenings at the hothouses furnished with automatic tissue cultivation system and the nursery gardens built throughout the country.

The corporation exports pine nuts, a Korean speciality, and other wild fruits and edible mountain herbs to foreign countries.

It is engaged in the cooperation and exchange of advanced science and technology in land and environment by establishing back-and-forth traffic system of information related to atmosphere, water, soil, ecological environment and water conservation, the prevention of flood damage and the protection of boundaries and territories, and introducing state-of-the-art equipment.

The corporation is conducting transit trade, consignment sale, barter trade and various forms of processing trade while encouraging joint ventures in mining development so as to expand the foreign markets.

Many foreign companies are wishing to have business contact with the corporation that puts credit above all in trade activities.

Its business activities in the protection of the DPRK's land and environment are the best magnet to attract global partners in cooperation and investment.

The corporation is ready to collaborate with all the trading firms and companies around the world in this field in order to expand and develop trade businesses.

Add: Poithonggang District, Pyongyang, DPR Korea

Tel: 850-2-18111-3818340

Fax: 850-2-3814410/3814416



The Mansud  
Companies is e  
ceramics uniqu  
to foreign coun

During the p  
unified state c  
talented ances  
variety of qual  
mottled porcel  
widely spread

bringing a wor  
Particularly,  
most distinguis





# Koryo Ceramics

The Mansudae Overseas Project Group of Companies is engaged in the export of Koryo ceramics unique in color, pattern and shape to foreign countries.

During the period of Koryo (918-1392), the unified state of Korea, our intelligent and talented ancestors baked and patronized a variety of quality jade-green, white, black and mottled porcelains. The Koryo porcelain was widely spread to many foreign countries, bringing a worldwide fame to our country.

Particularly, celadon porcelain holds a most distinguished place among them.

The jade-green color is achieved by the reducing flame created at the time when a certain amount of iron mixed in glaze and base clay is baked at a high temperature in the kiln, not by artificial pigment. Its color is clear, bluish yet beautiful as if it symbolizes the clear blue sky of Korea. Our ancestors succeeded in finding out elegant and noble color through protracted and painstaking research.

Conspicuous are the designs of Koryo porcelain. In ornamentation of Koryo porcelain, a wide range of designs are applied, including intaglio, relievé, openwork, stamping as well as painting decoration with brushes and inlaid decoration.

Diverse shapes fit for various uses and soft contour are another outstanding features of Koryo porcelain.

Koryo porcelain is an industrial art object on the acme of elegance and refinement marked by the harmonious combination of colors, patterns and shapes.

Inheriting the fine tradition, the People's Artists and Merited Artists and qualified ceramists in the Mansudae Overseas Project Group of Companies are creating various kinds of Koryo porcelain with high artistic value and rich national emotions, and with utility and ornamental value.

In the past, their works have won gold medals and special prizes in international markets and commodity exhibitions.

Introduced below are some of the works available for export:

Celadon vase with lake scenery (XL-55cm), celadon vase with cranes above clouds (M-25cm), celadon vase with apricot blossoms (L-40cm), celadon vase with pomegranate decoration (XL-40cm), celadon fruit tray (L-40cm), celadon vase with hunting scenery (XL-40cm), celadon flowerpot with bamboo decoration (L-40cm), celadon vase inlaid with broad bellflowers (XL-230cm), celadon vase inlaid with melons (L-40cm).

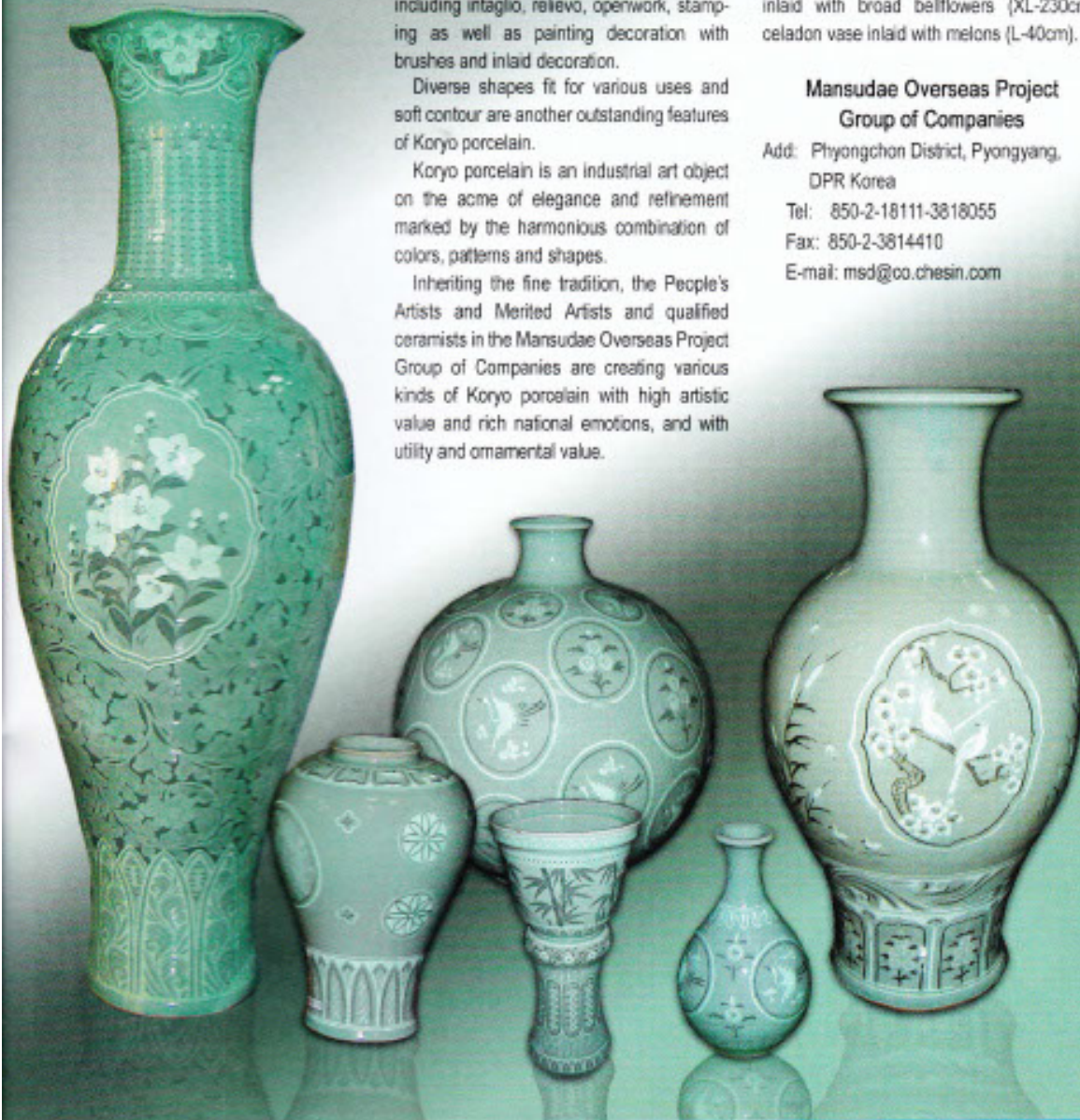
## Mansudae Overseas Project Group of Companies

Add: Phyongchon District, Pyongyang,  
DPR Korea

Tel: 850-2-18111-3818055

Fax: 850-2-3814410

E-mail: [msd@co.chesin.com](mailto:msd@co.chesin.com)





# 4-channel Embedded Video Server

No. 13627

MT-SO4H is a video server that commands 4 video channels and exercises the functions of a monitor and recorder of audio and sound, and an alarm on a real-time basis.

The device is applicable to various purposes with its multiple functions: compression of video and audio signals, remote monitoring, move detection and alarming by means of a computer and cellular phone and P/T/Z control.

#### Technical features

Number of input and output channels:

Video/audio input 4

Video/audio output 1

Mode of video compression: G729

Video output: PAL/NTSC (single channel)

Mode of video output: 4-division/cycle mode

Security: System manager, user

Power source: DC 12V, 10W or POE

Weight: 800g

Outer dimensions (LxWxH): 200x150x44 mm

Single-channel embedded video server MT-SOLM is also available.

#### Mirae Technology Corporation

Add: Central District, Pyongyang, DPR Korea

Fax: 850-2-3814410/3814416

